

FEBRUARY 2025

# iowa

ELECTRIC COOPERATIVE LIVING

Details about upcoming  
rate adjustment

Forces shaping the rural  
economy in 2025

Cherry recipes to love

Students: Apply for scholarships ▶ See Page 5

# CONTENTS



6



8



10

VOLUME 78 • ISSUE 2

3

### STATEWIDE PERSPECTIVE

Protecting electric service territory

3

### EDITOR'S CHOICE CONTEST

Win an Amazon Kindle

14

### SAFETY MATTERS

How to safely use a generator

15

### OUT BACK

Serving up lasagna love

**EDITOR**  
Ann Foster Thelen

**DESIGNERS**  
Megan Walters  
Bree Glenn

**IAEC DIRECTOR OF COMMUNICATIONS**  
Erin Campbell

**IAEC EXECUTIVE VICE PRESIDENT**  
Leslie Kaufman

**IAEC BOARD OF DIRECTORS**  
Jim Miller, District 5 – President  
Gordon Greimann, District 6 – Vice President  
Tony Lem, District 2 – Secretary/Treasurer  
Jerry Keleher, District 3 – Asst. Secretary/Treasurer  
Travis Harris, District 1  
Steve Inskeep, District 4  
Bruce Amundson, District 7  
Marion Denger, Prairie Energy Cooperative – NRECA Representative  
Terry Sullivan, Linn County REC – Managers' Representative

*Iowa Electric Cooperative Living* magazine (ISSN: 2770-8683) is published monthly by the Iowa Association of Electric Cooperatives, a not-for-profit organization representing Iowa's member-owned local electric cooperatives. Association address: 8525 Douglas Ave., Suite 48, Des Moines, IA 50322-2992. The phrase **Iowa Electric Cooperative Living** is a mark registered within the state of Iowa to the Iowa Association of Electric Cooperatives. The magazine does not accept advertising.

**Editorial Office**  
8525 Douglas Ave., Suite 48, Des Moines, IA 50322-2992. Telephone: 515-276-5350.

**Email Address**  
editor@ieclmagazine.com. *Iowa Electric Cooperative Living* magazine does not assume responsibility for unsolicited items.

**Website**  
www.ieclmagazine.com

**Postmaster**  
Send address changes to *Iowa Electric Cooperative Living* magazine, 8525 Douglas Ave., Suite 48, Des Moines, IA 50322-2992. Periodicals Postage Paid at Des Moines, Iowa, and at additional mailing offices.

**Change of Address**  
Every local electric cooperative maintains an independent mailing list of its members, so please send your change of address directly to your local electric cooperative's office. *Iowa Electric Cooperative Living* magazine cannot make an address change for you.

© Copyright 2025, Iowa Association of Electric Cooperatives. No portion of the editorial, photographic or other content of *Iowa Electric Cooperative Living* magazine or its website may be reproduced without written permission of the editor.



### ON THE COVER

Special thanks to Mary Bumann, a North West REC member-consumer, for supplying this month's cover image. Submit high-resolution photos for consideration to editor@ieclmagazine.com. You could receive \$100!

# PROTECTING ELECTRIC SERVICE TERRITORY IS OUR TOP 2025 LEGISLATIVE PRIORITY

BY ETHAN HOHENADEL



At the Iowa Association of Electric Cooperatives (IAEC), the start of a new year also means the start of a new legislative session as we advocate

for our member cooperatives and the member-consumers they serve.

Iowa's 91st General Assembly began on Jan. 13 and our policy and advocacy team is already hard at work. Protecting electric service territory is our top legislative priority this session.

In Iowa, your location determines which electric utility will serve your home, farm or business under the defined electric service territory law. For almost 50 years, these electric service areas have benefited electric co-op member-consumers as the law provides certainty to electric cooperatives so we can safeguard affordable rates, support a resilient electric grid and invest in economic development.

## Service territory changes jeopardize economic development

Weakening Iowa's electric service territory law jeopardizes electric cooperatives' investments in rural economic development, which would negatively impact the communities we serve.

For the five years ending in 2022, Iowa electric co-ops had an impressive \$4.7 billion impact in economic development projects. These investments supported more than 7,300 Iowa jobs (retained, attracted or expanded) during that same time period.

In 2023 alone, Iowa electric co-ops secured more than \$41 million in federal economic development funds, resulting in more than \$111 million of new capital investment in the state.

Decades of robust economic development efforts from electric cooperatives have improved quality of life throughout rural Iowa through local job

creation, providing needed services and adding valuable tax revenue. Without electric service territory protections, these rural economic development efforts will be severely diminished.

## Reduced electric service territory protections will increase rates

The realities of eroding electric service territory protections are sobering. In other states where service territories have been eliminated, consumers have experienced **higher** electric rates and **decreased** reliability.

According to a 2023 *New York Times* investigation, electric rates have **increased** in deregulated states. The report concludes, "Deregulation has resulted in increased rates/fees in every state where it has been introduced." And, "On average, residents living in a deregulated market pay \$40 more per month for electricity ..." Referencing an American Public Power Association 2021 report, "The average electric rate is **28% higher** in deregulated states, as compared to traditionally regulated states."

## Reduced electric service territory protections will decrease reliability

Our analysis of publicly available industry data shows that electric

reliability is **lower** in deregulated Midwestern states compared to Iowa. From 2018-2023, **electric outages in Iowa were 65% shorter on average** compared to deregulated Midwestern states. During that same time period, **Iowans experienced 20% fewer outages** than deregulated Midwestern states. This analysis comes from EIA-861 SAIDI (System Average Interruption Duration Index) and SAIFI (System Average Interruption Frequency Index) data from Iowa, Illinois, Michigan and Ohio and includes major weather events.

## Protecting the interests of co-op member-consumers

Weakening service territory protections is unacceptable for Iowa's electric cooperatives and the members we serve. Your locally owned electric co-op supports Iowa's defined electric service territory law and opposes efforts to undermine it, which reduce consumer protections. Learn more about this important issue at [www.ProtectRuralIowa.com](http://www.ProtectRuralIowa.com).

*Ethan Hohenadel is the director of policy and advocacy for the Iowa Association of Electric Cooperatives.*

## EDITOR'S CHOICE CONTEST

## WIN AN AMAZON KINDLE!

Meet the lightest and most compact Kindle, now with enhanced display features and faster page turns. The front light is 25% brighter at max setting, now as bright as Kindle Paperwhite. With the adjustable front light and dark mode, read effortlessly any time of day on the 6-inch glare-free 300 ppi display.

### Visit our website and win!

Enter this month's contest by visiting [www.ieclmagazine.com](http://www.ieclmagazine.com) no later than Feb. 28. You must be a member of one of Iowa's electric cooperatives to win. There's no obligation associated with entering, we don't share entrant information with anyone and multiple entries from the same account will be disqualified.

The winner of the Ember Smart Mug from the December issue was **Dawn Dubbelde**, a **Lyon REC** member-consumer.



ENTER ONLINE BY FEB. 28!

# UPCOMING RATE ADJUSTMENT: ENSURING RELIABILITY AND SUSTAINABILITY

BY TROY AMOSS



As we settle into 2025, I want to take a moment to connect with you personally and share an important update.

At Chariton Valley Electric Cooperative (CVEC), we're committed to transparency and always striving for the best service possible. One of the most significant updates for the year is a rate adjustment, which will take effect on your May 2025 bill. This adjustment is a necessary step to ensure we can continue providing you with the reliable, affordable power that you rely on while also addressing the growing challenges of maintaining and improving the electric system.

## Why a rate adjustment?

Electricity rates are shaped by a variety of factors. As much as we wish we could keep everything steady, rising fuel costs, the need to maintain aging infrastructure, compliance with regulatory standards and ongoing investments in modern technology all contribute to the need for a rate

adjustment. These changes allow CVEC to uphold its promise to provide fair and equitable rates while ensuring financial stability for the cooperative.

## What to expect

We are still finalizing the details of the rate adjustment, but I want you to know that we are working hard to minimize its impact on you. This is not about making unnecessary increases – it's about accurately reflecting the true cost of delivering electricity to your home or business.

## Looking forward

This rate adjustment is more than just a change for today – it's an investment in the future. It will help us to ensure we can continue providing you with the reliable electricity you depend on while also building a sustainable foundation for CVEC moving forward.

In the coming months, we'll share more details about what these changes mean for you. At CVEC, we deeply value the trust you place in us, and we remain committed to balancing operational costs with our mission to serve you as efficiently and fairly as possible.

Thank you for your understanding and your continued support as we navigate these necessary changes together.

Stay tuned for next month's article, where I will dive deeper into the factors driving this rate adjustment and explain how we are working to keep costs in check while maintaining top-notch service.

*Troy Amoss is the CEO/general manager of Chariton Valley Electric Cooperative.*

## CVEC RECOGNIZES SERVICE ANNIVERSARIES

Each year, Chariton Valley Electric Cooperative (CVEC) proudly recognizes the dedication and service of our employees and directors. Their contributions have been instrumental in the cooperative's growth and success, ensuring we continue to meet the needs of our members and community.

At this year's annual holiday gathering, the following individuals were honored with service awards, celebrating their years of commitment and achievements.

Our valued employees and directors form the backbone of CVEC, and their dedication strengthens the cooperative. We extend our heartfelt congratulations to these remarkable individuals as they celebrate these significant milestones in their cooperative careers.



**Trudy Grade**  
Finance Manager  
15 Years



**Jerry Durian**  
Director  
5 Years



**Richard Welsh**  
Director  
25 Years



### Office

2090 Highway 5 South • P.O. Box 486  
Albia, IA 52531-0486

### Office Hours

Monday through Friday, 8 a.m.-4:30 p.m.  
Closed Saturdays, Sundays and holidays

### Telephone Numbers

Days, nights or holidays:  
641-932-7126 (local)  
or 800-475-1702

### Website

[www.cvrec.com](http://www.cvrec.com)

We accept



This institution is an equal opportunity provider.

# HIGH SCHOOL SENIORS: APPLY NOW FOR CVEC SCHOLARSHIPS

Are you a graduating high school or home-schooled senior – or do you know one? Don't miss the opportunity to apply for Chariton Valley Electric Cooperative's (CVEC) scholarships. This year, CVEC will award \$5,500 in scholarships to support students pursuing their dreams of higher education.

## Scholarship opportunities

- **Four \$1,000 scholarships:** Open to students planning to pursue post-secondary education in any field of study.
- **One \$1,500 scholarship:** Specifically for a student planning to attend an accredited electrical lineworker program, climbing school or training center, or major in electrical engineering.

## Applicant qualifications

- Must be graduating from an accredited high school or home-schooling program.
- Parents or legal guardians must be members of CVEC.
- Must plan to attend an accredited institution of higher learning, including vocational schools, technical schools, junior colleges or universities.
- Must complete an application and a 500-600-word essay describing: How will your education help you contribute to your community, and what steps will you take to ensure your success benefits others?
- Must maintain a 2.5 GPA during the first semester of college and provide proof of enrollment in the second semester to receive the scholarship disbursement.



## Application deadline

All application materials must be submitted to CVEC by **March 31**.

Scholarship recipients will be selected based on academic achievement, leadership and initiative, goals and aspirations and their essay. The selection committee is comprised of cooperative leaders from the surrounding area.

For more details, visit our website at [www.cvrec.com/scholarship-program](http://www.cvrec.com/scholarship-program), contact CVEC at 641-932-7126 or check with your high school guidance counselor.

Empower your future today – apply for a CVEC scholarship!

# ANNA SEE COMPLETES COOPERATIVE LEADERSHIP IN IOWA PROGRAM

Chariton Valley Electric Cooperative (CVEC) is proud to announce that Anna See, our communications coordinator and executive assistant, has graduated from the 2024 Cooperative Leadership in Iowa Program (CLIP).

Organized by the Iowa Association of Electric Cooperatives, CLIP is a prestigious yearlong program designed for emerging leaders in the cooperative industry. It provides participants with a comprehensive schedule of in-person, virtual and on-demand training sessions. These sessions focus on cultivating leadership

skills and deepening participants' understanding of cooperative roles and responsibilities.

Anna's achievement is a testament to her dedication and commitment to CVEC and the cooperative model. Her participation in CLIP not only reflects her personal growth but also strengthens the cooperative's mission to provide exceptional service to our members.

"Anna is truly the role model of a cooperative employee. She always strives to do what benefits the cooperative before herself," says Troy Amoss, CEO/general manager of CVEC.



CVEC congratulates Anna and all the graduates of the 2024 CLIP program. Their leadership and vision will undoubtedly help shape the future of Iowa's cooperatives.

# HOW ELECTRIC CO-OPS ARE PREPARING FOR THE FAST-GROWING DEMAND FOR ELECTRICITY

BY SCOTT FLOOD

The demand for electric power continues to increase, and America's peak demand is forecast to grow by 38 gigawatts through 2029 – the equivalent of adding another California-sized state to the nation's power grid. At the same time, power producers plan to retire more than 110 gigawatts of baseload, or always-available, generation by 2033.

When demand outpaces supply of any commodity – corn, gasoline or electricity for example – prices tend to increase. In addition, there's increasing concern about the potential for rolling outages as power providers struggle to meet peak demands.

Local co-op members may not notice the impact of the supply and demand imbalance for some time, but it's captured the attention of electric co-op directors and their staffs.

"The leadership at many electric co-ops is seeing unprecedented growth in demand," explains Stephanie Crawford, regulatory affairs director for the National Rural Electric Cooperative Association.

A decade ago, a huge commercial project might boost a co-op's total load by 20 or 30 megawatts. "Now they're getting multiple requests for projects in the hundreds of megawatts," she adds.

## AI and cloud computing are driving demand

Artificial intelligence (AI) and cloud computing are key drivers of this added demand. As use of AI skyrockets and a greater share of computer applications and storage migrate to the cloud, all that data needs to be stored somewhere. Data centers, which are massive groups of high-capacity computer servers, provide the most efficient way to handle it.

According to the U.S. Department of Energy, data centers can consume as much as 50 times the energy per floor space of other types of commercial buildings. A single large data center may use over 100 megawatts of power, the equivalent of powering 80,000 homes. Data centers already account for nearly 2% of the nation's electricity use, and the Electric

Power Research Institute predicts that will grow to 9% by 2030.

"It's not only a question of needing to build or obtain more capacity, but in many cases, also creates questions about the availability of transmission and distribution," Crawford notes.

Data centers can significantly benefit local economies by creating high-paying jobs during construction and operation, generating substantial tax revenue, attracting related tech industries, boosting local infrastructure development, and stimulating demand for local services like security and maintenance, effectively creating a ripple effect through the community.

## Co-ops focus on knowledge and relationships

For electric co-ops, the efforts fall into two categories: increasing knowledge and building relationships. A generation ago, power supply discussions were fairly straightforward for co-op directors, given the widespread availability of baseload generation. Today's directors increasingly find themselves learning about sophisticated and challenging issues as they weigh decisions affecting their co-op's operations and financial viability for years to come.

Co-ops have long emphasized relationship-building, and Crawford stresses that will continue with companies developing large projects such as data centers.

"Early and frequent conversations between the co-op and the entities seeking additional energy are critical," she explains. "That includes honest conversations about the costs and timelines involved."

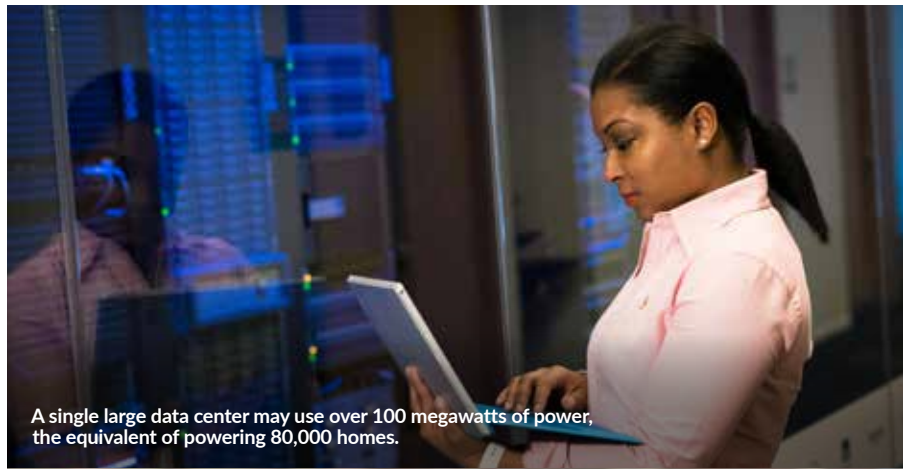
For example, while a data center project might ultimately need a significant supply of megawatts, if its operations are phased in gradually over several years, the co-op may have additional time to prepare for the maximum load. They might consider creating a partnership with the project owner to develop new generation assets on the project's site, reducing transmission concerns.

## Reliability is a cornerstone

The large tech companies involved in deploying data centers and similar projects are highly sophisticated and well-resourced. They tend to be less interested in obtaining the lowest cost and are more focused on reliability.

"What we're hearing from co-ops is that the companies building data centers typically have done their homework before they start talking to co-ops," Crawford says.

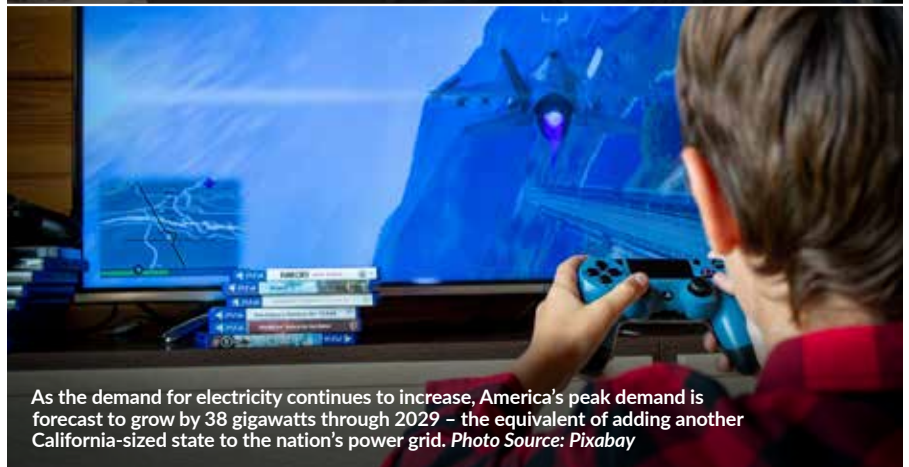
While the developers may be ready to pay for the substantial infrastructure upgrades needed to serve their data centers, she notes that the conversations may end up



A single large data center may use over 100 megawatts of power, the equivalent of powering 80,000 homes.



Today's co-op directors increasingly find themselves learning about sophisticated and challenging issues as they weigh decisions affecting their co-op's operations and financial viability for years to come.



As the demand for electricity continues to increase, America's peak demand is forecast to grow by 38 gigawatts through 2029 - the equivalent of adding another California-sized state to the nation's power grid. Photo Source: Pixabay

focusing more on project timelines and data center obligations to remain as co-op member-consumers. In addition to supply chain issues related to transformers and other components that are in increasingly short supply, projects may face regulatory delays at all levels.

While co-ops prepare for projects from organizations new to the co-op, Crawford notes the importance co-op leaders also place on keeping a finger on the pulse of their existing commercial accounts.

"Being proactive and reaching out to understand how a commercial account's energy needs may be changing in the coming years informs conversations and decisions about timing, rate design and other factors, even if they're not making specific requests yet," she says. "That helps the co-op serve emerging needs while protecting the reliability for all of its members."

*Scott Flood writes on a variety of energy-related topics for the National Rural Electric Cooperative Association.*

# Cherry Recipes

TO LOVE



## CLASSIC SOUR CREAM CHEESECAKE

- 1½ cups graham cracker crumbs
- ¼ cup sugar
- ⅓ cup margarine or butter, melted
- 3 8-ounce packages cream cheese, softened
- 1 14-ounce can sweetened condensed milk
- 3 eggs
- ¼ cup lemon juice from concentrate
- 1 8-ounce container sour cream
- 1 21-ounce can cherry pie filling, chilled

Combine crumbs, sugar and margarine or butter. Press firmly on bottom of 9-inch springform pan. In large mixing bowl, beat cream cheese until fluffy. Gradually beat in sweetened condensed milk until smooth. Beat in eggs, then lemon juice and sour cream. Pour into prepared pan. Bake at 350 degrees F for 50-55 minutes or until lightly browned around the edges, the center will be slightly soft. Cool and refrigerate. Top with cherry pie filling before serving. Refrigerate leftovers.

Ruth Seehusen • Greene  
Butler County Rural Electric Cooperative

## QUICK CHERRY DESSERT

- 1 package chocolate pudding
- 1 can cherry pie filling
- whipped topping, optional

Prepare pudding and mix with cherry pie filling. Top with a dollop of whipped topping, if desired. Serves 8

Darlene Thomas • Somers  
Calhoun County Electric Cooperative Association

## CHERRY CRUNCH CAKE

- 1 chocolate cake mix
- 2 eggs
- 1 21-ounce can cherry pie filling
- ¾ cup nuts, chopped
- ¾ cup chocolate chips
- ½ cup brown sugar

Mix cake mix, eggs and pie filling. Pour in a greased 9x13-inch pan. Sprinkle nuts, chocolate chips and brown sugar over top. Bake at 350 degrees F for 30-35 minutes. Serves 15-20

Carma Mack • Audubon  
Raccoon Valley Electric Cooperative

## CHERRY WINE BALLS

- 3 cups vanilla wafers, finely crushed
- 2 cups powdered sugar
- 1 cup pecans or walnuts, finely chopped
- ¼ cup cocoa
- ½ cup cherry wine
- ¼ cup light corn syrup
- granulated sugar, as needed

Mix wafers, powdered sugar, nuts and cocoa. Stir in wine and corn syrup, then shape into 1-inch balls. Roll wine balls in granulated sugar. Cover tightly and refrigerate several days before serving. These are easy to make in a food processor. Yields 5 dozen

Patricia Glandorf • Williamsburg  
T.I.P. Rural Electric Cooperative





Visit [www.ieclmagazine.com](http://www.ieclmagazine.com) and search our online archive of hundreds of recipes in various categories.

## INDIVIDUAL CHERRY CHEESECAKES

- 3 8-ounce cream cheese packages, room temperature
- 1¼ cups white sugar, divided
- 5 large eggs
- 1¾ teaspoons vanilla, divided
- 1 cup sour cream
- 1 can cherry pie filling

Cream the cream cheese and 1 cup sugar together. Add eggs one at a time, beating well. Add 1½ teaspoons vanilla, then pour cream cheese mixture into foil-lined muffin tins, filling each ¾ full. Bake at 300 degrees F for 40 minutes. These will not brown. Meanwhile, mix sour cream, ¼ cup sugar and ¼ teaspoon vanilla. Once cheesecakes have baked, cool for about 4 minutes. Then add a small spoonful of sour cream topping and a dab of cherry pie filling to each. Bake for 5 more minutes. Remove from oven, cool, then refrigerate. These can be frozen. *Yields 24 cheesecakes*

Kathy Grote • Wall Lake  
Raccoon Valley Electric Cooperative

## CHERRY COFFEE CAKE

- 1 cup margarine
- 1¾ cups sugar
- 4 eggs
- 1 teaspoon vanilla
- 3 cups flour
- ½ teaspoon salt
- 1½ teaspoons baking powder
- 1 can cherry pie filling

Cream margarine, sugar and eggs. Add vanilla and dry ingredients. Spread batter on bottom of a 12x18-inch jelly roll pan prepared with cooking spray. Drop pie filling on batter by spoonful, swirl with knife. Bake at 350 degrees F for 30 minutes, no longer or the cake will get too dry. *Serves 24*

Anita Destival • Sumner  
Butler County Rural Electric Cooperative

## TROPICAL SMOOTHIE

- 1½ cups lemonade
- ½ cup frozen mango chunks
- ½ cup frozen pineapple chunks
- 1 cup frozen cherries
- ½-1 cup sugar

Mix all ingredients in blender. *Serves 2*

Bethany Van Wyhe • Lester  
Lyon Rural Electric Cooperative

## CHERRY MARASCHINO BARS

- 1¼ cups flour, divided
- ½ cup butter or margarine
- 3 tablespoons powdered sugar
- 1 cup white sugar
- 2 eggs
- ½ teaspoon baking powder
- ¼ teaspoon salt
- 1 teaspoon vanilla
- ¾ cup chopped nuts, optional
- ½ cup coconut
- ½ cup or more red maraschino cherries, drained and diced

Combine 1 cup flour, butter or margarine and powdered sugar. Blend well and spread in a buttered 8-inch pan. Bake at 350 degrees F for 25 minutes. Meanwhile, combine sugar, eggs, ¼ cup flour, baking powder, salt and vanilla. Beat until smooth and well blended. Stir in chopped nuts, if desired, coconut and maraschino cherries. Spread on the baked crust layer and return to the oven for 25 minutes. Cool and cut into 2x2-inch bars. *Serves 16*

Twyla Godbersen • Arthur  
North West Rural Electric Cooperative

WANTED:

## CAMPING RECIPES

THE REWARD:  
\$25 FOR EVERY ONE WE PUBLISH!

Deadline is Feb. 28

Submit your favorite recipes to enjoy around the campfire. Please include your name, address, telephone number, co-op name, recipe category and number of servings on all submissions.



EMAIL: [recipes@ieclmagazine.com](mailto:recipes@ieclmagazine.com)  
(Attach your recipe as a Word document or PDF to your email message.)

MAIL: Recipes  
Iowa Electric Cooperative Living magazine  
8525 Douglas Ave., Suite 48  
Des Moines, IA 50322

# COBANK: FORCES THAT WILL SHAPE THE U.S. RURAL ECONOMY

At the end of 2024, CoBank – one of the largest providers of credit to the U.S. rural economy – released its “2025 Year Ahead Report: Forces that will Shape the U.S. Rural Economy.”

The financial services firm says the U.S. continues to benefit from solid economic growth, low unemployment and moderating inflation. However, the outlook for the rural economy is more volatile and uncertain. Rural industries are disproportionately exposed to federal policy, and the outcome of the 2024 election cycle promises to bring significant changes in the federal government’s approach to everything from international trade and immigration to energy exploration and rural economic development.

According to the comprehensive report, the high level of policy uncertainty facing rural industries adds to their already long list of headwinds and challenges.

The CoBank 2025 outlook report examines several key factors that will shape agriculture and market sectors that serve rural communities throughout the U.S.

## 1 U.S. economy: A new economic era begins

Most economists are forecasting 2025 U.S. gross domestic product growth around 2.5%-3.0%, essentially the same as today. However, those forecasts are based on rather mild assumptions about forthcoming policy changes. When taken in isolation, President Trump’s proposed policies – tax cuts, decreased labor supply and tariffs on imported goods – are all inflationary. Consequently, longer-term interest rates have already edged higher, and the market has downshifted expectations for further federal rate cuts in 2025. There is a good chance the proposed tariffs and the crackdown on undocumented immigrants will be more disruptive than markets have priced in, particularly in industries like construction and agriculture.

## 2 U.S. agricultural economy: Trade war could send ag economy from bad to worse

The short-lived commodity boom precipitated by global droughts, the war in Ukraine and COVID-19 supply

issues is now a distant memory. Row crop prices are down nearly 50% from their 2022 highs. But production costs have remained elevated, and profitability has plunged to decade-plus lows. The silver lining is that dairy and livestock producers are generally profitable due to low feed costs and resilient consumer demand. However, more headwinds may be coming for both the crop and livestock sectors.

## 3 Grains, farm supply and biofuels: Policy uncertainty weighs on exports, biofuels

A strengthening U.S. dollar and the potential for trade disputes and record-large South American crops weigh heavily on the outlook for grain and oilseed prices in 2025. U.S. farmers are widely expected to struggle with further margin compression as weaker commodity prices test farmers’ ability to lower production costs. Crop input decisions will be evaluated much more closely with a focus on inputs that provide the greatest return on investment. The bearish outlook for oil prices diminishes the demand

picture for ethanol, biodiesel and renewable diesel. Uncertainty over U.S. biofuel policy under the new administration also clouds the demand outlook for biofuels.

**4 Animal protein: Rising margins improve prospects for growth**

Falling feed costs and rising producer margins have renewed expansion interest in animal protein segments. However, labor, construction and land costs remain elevated, tempering expectations for any meaningful supply growth in the near term. U.S. beef cow herd expansion is not expected to start until 2026 or 2027. The smaller herd will further support higher feeder and fed cattle prices in the coming year. With consumers now pushing back on beef prices that are already near historic highs, packer margins will remain under pressure well into 2025.

**5 Dairy: Record investment will continue to grow the category**

The U.S. will see an unprecedented \$8 billion in new dairy processing investment through 2026. Some of the new plants are poised to come online in 2025, with about half of the investment in the cheese category. The expected surge in cheese and whey output will likely put downward pressure on dairy product prices in the second half of the year. Sourcing additional milk supplies to fill new plant capacity is a looming question. 2023 and 2024 will go down as the first back-to-back years since the late 1960s that U.S. milk production

took a downturn. On the flip side, higher component levels in farmgate milk, largely butterfat and protein, have lifted finished product yields.

**6 Food and beverage: Health and nutrition take center stage**

The headline news for food, beverage and consumer packaged goods in 2025 is President Trump's nomination of Robert F. Kennedy Jr. to lead the U.S. Department of Health and Human Services. Kennedy's purported goals include eliminating ingredients banned in other countries and "getting the chemicals out" of America's food supply. Meanwhile, consumers' renewed focus on their health and the popularity of GLP-1 weight-loss drugs are showing signs of impacting food manufacturers. According to J.P. Morgan research, GLP-1 users purchase around 8% less food compared with average consumers. Food and beverage manufacturers' concerns about volume attrition are likely to continue well into 2025.

**7 Power and energy: What an IRA rollback might look like**

President Trump's return to the White House will signal a significant shift in U.S. energy policy. While he has promised to end the Inflation Reduction Act (IRA), slowing the clean energy momentum that has accelerated under the IRA may be more difficult than imagined. Popular programs in the IRA have directed significant investments to many rural and economically distressed communities. And more than a dozen

House Republicans have voiced concern that repealing the IRA could jeopardize ongoing development in their communities. Clawing back IRA funds that have already been allocated could prove to be very difficult. The more likely scenario is that unallocated IRA funding will be redirected to other priorities.

**8 Digital infrastructure: Rural connectivity faces new challenges**

Political uncertainty and low participation in the Broadband, Equity, Access and Deployment (BEAD) program raises big questions for bridging the digital divide in the year ahead. The \$42.5 billion BEAD program, created by the Infrastructure Investment and Jobs Act, includes unprecedented government support. However, a lack of operator participation could blunt the impact of this well-intended program to bring reliable broadband access to underserved rural areas. Many small operators lack the specialized expertise or financial resources to meet some of the complicated BEAD requirements.



Scan the QR code to read the full report.



# EFFECTIVE WAYS

## To Lower Home Energy Use

Outside factors, such as fuel and equipment costs and extreme weather, can impact electricity prices. But you have the power to control home energy consumption by taking proactive steps to reduce energy use.



### Thermostat Management

The thermostat is one of the best places to lower your energy use because heating and cooling account for a significant portion of home energy consumption. During winter months, adjust your thermostat to the lowest comfortable setting to reduce energy use. The U.S. Department of Energy recommends 68 degrees F or lower.



### Utilize Off-Peak Energy Times

Plan energy-intensive chores and tasks, such as running the dishwasher or washing clothing, during off-peak energy hours, when the demand for electricity is lower. Off-peak times are early in the morning or late evenings. By scheduling these activities during off-peak periods, you can help keep rates lower, reduce demand and relieve pressure on the grid.



### Seal Your Home

According to ENERGY STAR®, about 20% of heated or cooled air that moves through a home is lost due to lack of proper insulation and air leaks. Ensure your home has sufficient insulation levels and seal air leaks around windows and doors with caulk and weatherstripping. This is a simple, effective way to lower energy use and improve indoor comfort.



### Maintain Equipment

The health of your heating and cooling system is essential for comfort and can greatly impact energy bills. Maintain your system by regularly replacing dirty filters and scheduling annual inspections for maintenance and necessary repairs.

# UNDERSTANDING FACTORS THAT IMPACT YOUR ENERGY BILLS

February brings some of the coldest weather of the year, and as our home heating systems work harder and longer to keep us warm, we typically see higher energy bills. There are a few key factors that affect electricity prices, as well as a few ways you can make a meaningful impact on home energy savings.

When you receive your monthly bill from Chariton Valley Electric Cooperative (CVEC), it includes a summary of your electricity usage for the billing cycle. The bill offers a comparison of your monthly electricity use over a 13-month period, helping you identify trends, such as increased usage during colder months or shifts in energy consumption over time.

But you might be surprised to learn that beyond your monthly energy consumption, there are external factors that can impact the cost of electricity.

### Fuel prices

CVEC purchases electricity from our power generation partner, Associated Electric Cooperative (Associated), at a wholesale cost, then we deliver that power to our local communities. The cost of generating and transmitting electricity from our generation partner accounts for a significant portion of the cost to provide electric service to local homes and businesses – and the cost of fuels that are used to generate that electricity, such as natural gas and coal, fluctuate based on supply and demand. While these fluctuations can impact the cost of electricity, we work closely with Associated to plan ahead and help stabilize electricity prices for our members.

### Extreme weather

While we can't control the weather, we can review weather patterns and forecasts to prepare for times of extreme cold or heat, when we know the demand for electricity will increase. But when temperatures become extremely cold and the demand

for electricity spikes, the price of electricity can also increase.

### Infrastructure and equipment

To cover the costs associated with providing electricity to your home or business, CVEC members pay a monthly service availability charge. This flat monthly fee ensures the cost of equipment, materials, labor and daily operations are covered for all members in CVEC's service territory. To ensure the reliable service you expect and deserve, we must maintain the local grid, including power lines, substations and other essential equipment.

### Energy policies and regulations

Federal energy policies and regulations can have a profound impact on electricity costs. As energy generation shifts to the use of more renewable sources and stricter regulations for traditional, always-available fuel sources, such as natural gas and coal plants, costly upgrades and technologies must be constructed and deployed. These additional costs are ultimately passed to consumers.

U.S. power consumption is expected to double by 2050. Across the country, electric cooperatives are working with members of Congress to advocate for smart energy policies that reliably power our local communities.

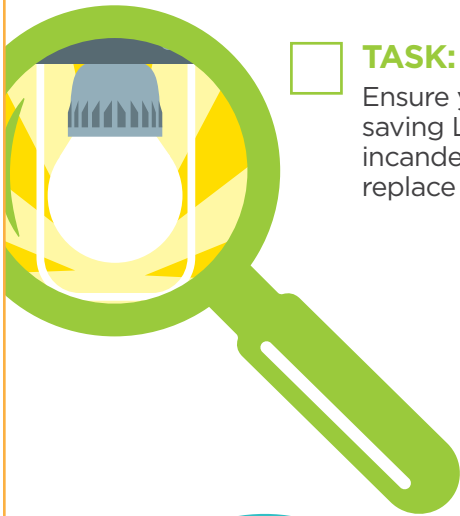
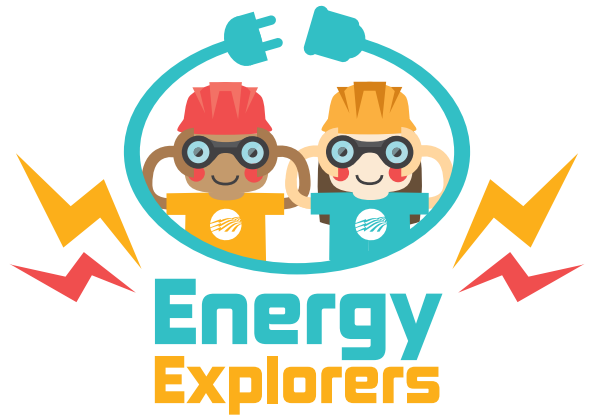
### You have control

While many of these external factors that impact electricity costs are out of our control, we all have the power to manage our energy use at home. Check out the tips in the graphic on this page for ways to lower your home energy use.

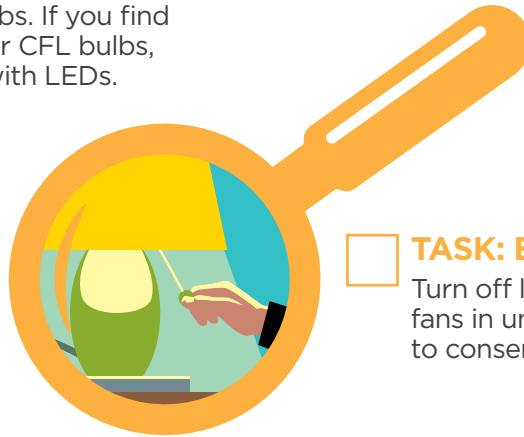
CVEC is your local energy partner, and we're here to help. Visit [www.cvrec.com](http://www.cvrec.com) to learn about our efficiency programs designed to help you save. As always, we will continue working diligently to provide you with reliable power at an affordable cost.

# ENERGY SAVINGS SCAVENGER HUNT

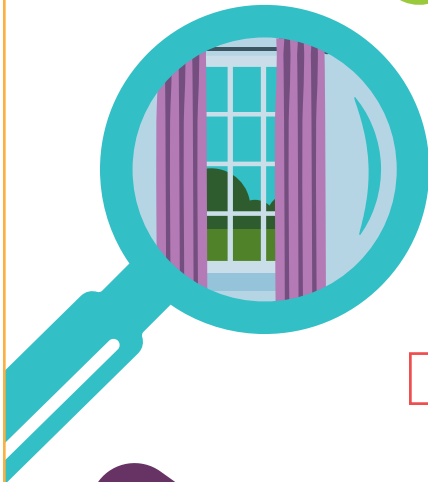
Saving energy at home is a great way to help the environment (and save money). With the help of an adult, look for ways you can save energy around your home. Use the tips below to get started, then check off the areas where you've identified ways to save!



- TASK: Bright Ideas**  
Ensure your home uses energy-saving LED bulbs. If you find incandescent or CFL bulbs, replace them with LEDs.

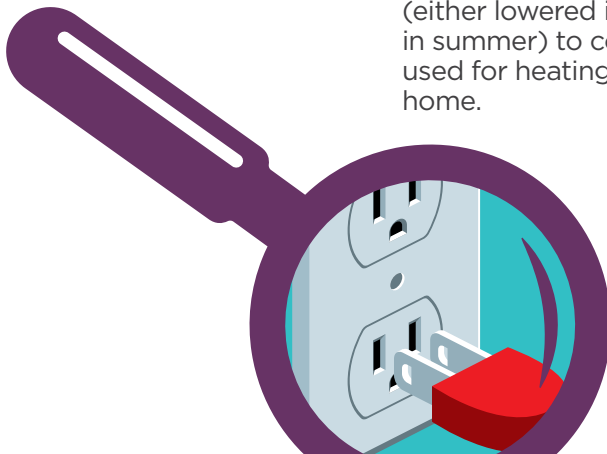


- TASK: Empty Rooms**  
Turn off lights and ceiling fans in unoccupied rooms to conserve energy.



- TASK: Sealed for Savings**  
Check windows to make sure they are closed and locked. Sealed windows help prevent air leaks, which saves energy.

- TASK: Set to Save**  
Check the thermostat to see if it can be adjusted a few degrees (either lowered in winter or raised in summer) to conserve energy used for heating or cooling your home.



- TASK: Slay Energy Vampires**  
Energy vampires are devices that consume energy even when they're not being used. Unplug these items, like phone chargers and tablets, when you're not using them.

# HOW TO SAFELY USE A GENERATOR

Before using a portable generator, it's essential to understand the potential dangers associated with using them, such as their production of carbon monoxide (CO). CO is an odorless, colorless and tasteless poisonous gas that is called the "silent killer" because it is virtually undetectable without the use of technology like CO alarms. Follow these tips when using a generator.

**1 Read and follow all manufacturer operating instructions to properly ground the generator.** Be sure you understand the directions before hooking up the generator.

**2 A generator is a temporary power source.** It should never be used as a permanent solution.

**3 Maintain adequate ventilation because generators emit CO.**

It's against fire code to operate a generator in your home, garage or other enclosed building. Place it in a dry location outdoors.

The Consumer Product Safety Commission recommends generators be positioned at least 20 feet from doors, windows and vents to prevent CO from entering the home.

**4 Never plug a portable electric generator into a wall outlet or connect directly to a home's wiring.** This can energize utility power lines and injure you or others working nearby. Electrical back feed can also damage the generator and home electrical equipment.

**5 Turn off the generator and allow cooling before refueling.**

Gasoline and its vapors may ignite if they come in contact with hot components or an electric spark. Store fuel in a properly designed container in a secure location away from the generator or other fuel-burning appliances, such as water heaters. Always have a fully charged, approved fire extinguisher located nearby.



**6 Protect your appliances.** Turn off or disconnect all appliances and lights before you begin operating the portable generator. Once the generator is running, turn your appliances and lights on one at a time to avoid overloading the unit. Remember, generators are for temporary usage, so prioritize your needs.

**7 Generators pose electrical risks, especially when operated in wet conditions.** Use a generator only when necessary when the weather creates wet or moist conditions. Protect the generator by operating it under an open, canopy-like structure on a dry surface where water cannot form puddles or drain under it. Make sure your hands are dry before touching the generator.

**8 Keep children and pets away from portable generators at all times.** Many generator components are hot enough to burn you during operation.

**9 Use proper extension cords.** Use only safety-tested, shop-type electrical cords designed and rated for heavier, outdoor use to connect appliances. Many generators are equipped with twist-lock connects to reduce the chance of accidental disconnections due to vibrations.

**10 Shut down the generator properly.** Before shutting down a generator, turn off and unplug all appliances and equipment being powered by the generator.

**11 Remember maintenance between uses.** Drain the gasoline from the generator while it is being stored. It's also a good idea to inspect the fuel and oil filters, spark plug, oil level and fuel quality, and to start the generator on a regular basis before an emergency situation happens.

For more information, visit [Safe Electricity at safeelectricity.org](http://SafeElectricity.org)

# SERVING UP LASAGNA LOVE

BY DARCY DOUGHERTY MAULSBY

During these cold winter days, nothing can brighten your day like classic comfort food. For me, that often means homemade lasagna.

Ahh ... lasagna! Layers of melted cheese piled on delectable meat and tender pasta, all smothered with a savory sauce that would bring tears to the most cynical Italian's eyes.

Did you know lasagna didn't originate in Italy? While its roots can be traced to ancient Greece, we can thank the ancient Romans for embracing – and refining – this culinary delight.

While I don't recall the first time I tried lasagna, I'm sure it was during my childhood. Perhaps I was influenced by Garfield the cat, the snarky comic strip character of the 1980s who was obsessed with this perfect pasta.

## Becoming a lasagna chef

My love for lasagna reignited a few years ago when I was writing a newsletter for the Green Hills retirement community in Ames. As I interviewed a Green Hills newcomer about her hobbies, she mentioned she was a Lasagna Love volunteer. I'd never heard of this. Tell me more!

Lasagna Love is a simple, grassroots concept that took off during the COVID-19 pandemic. Volunteers (called "Lasagna Chefs") cook and deliver homemade lasagnas to families in need within their local communities.

Families can request a meal without having to explain their situation. They're matched with a nearby volunteer chef, and the chef delivers the meal directly to their doorstep. The mission is to spread kindness and create a sense of community through food.

I was so intrigued that I signed up that same day at [www.lasagnalove.org](http://www.lasagnalove.org) to become a Lasagna Chef. (Anyone can volunteer, by the way.) It wasn't long before Lasagna Love matched me with



a young, single mom in Auburn who was working and going back to school. I never met her (I simply dropped off the lasagna at her front door, as she requested), but it felt good to help someone in need.

## Food is love made visible

As more matches came through Lasagna Love, I prepared and delivered homemade lasagnas to local families in Manson, Sac City, Lohrville and Rockwell City. Some recipients greeted me at the door and expressed their gratitude. One lady texted me after she baked and served the lasagna, informing me it was the best she'd ever eaten.

The more I participated in Lasagna Love, the more curious I became about the program's history. Rhiannon Menn, a mother and chef from the West Coast, saw that many of her fellow moms were struggling to manage stress, anxiety and depression during the COVID-19 pandemic. Facing her own feelings of helplessness, Menn decided she could cook.

She posted in two local Facebook groups offering a free homecooked meal and received seven replies. Menn

prepared seven pans of lasagna for people she didn't know, drove around San Diego and delivered these meals to strangers. That's how Lasagna Love was born.

Since then, Lasagna Love has grown into an international movement of kindness, impacting thousands of volunteers and recipient families each week. Sometimes those moments of kindness mean more than you know.

Around Thanksgiving 2024, I received a request to make lasagna for an older couple in Lake City. I've known these people my whole life and enjoyed an hour-long visit with them in their home after I dropped off their lasagna. A few weeks later, I was shocked to hear that the wife had suddenly passed away.

I was grateful I had the opportunity to serve this wonderful couple through Lasagna Love. I look forward to helping more families in the year ahead. Truly, food (especially lasagna) is love made visible.

*Darcy Dougherty Maulsby lives near her family's Century Farm northwest of Lake City. Visit her at [www.darcymaulsby.com](http://www.darcymaulsby.com).*



IOWA ELECTRIC COOPERATIVE LIVING

The magazine  
for members of  
Iowa's electric  
cooperatives

February 2025

Visit our website at [www.cvrec.com](http://www.cvrec.com)



# ENERGY WHEN YOU NEED IT

For generations we've powered the growth of our neighborhoods, businesses, and everything in between. Today our commitment is stronger than ever to provide affordable energy on which you can depend.

**YOUR SOURCE FOR POWER. AND INFORMATION.**

Visit us at: [WWW.TOUCHSTONEENERGY.COM](http://WWW.TOUCHSTONEENERGY.COM)



Touchstone Energy®  
Cooperatives